

LEGEND		
SYMBOL	DESCRIPTION	AREA/ QUANTITY
---	POLYCARBONATE WINDOW	4
	EXTERIOR WALL LIGHTS	2
	INTERIOR WALL LIGHTS	5
	INTERIOR CEILING LIGHTS	6
⊕	FLOOR DRAIN	3
⊕	ELECTRICAL OUTLET	2

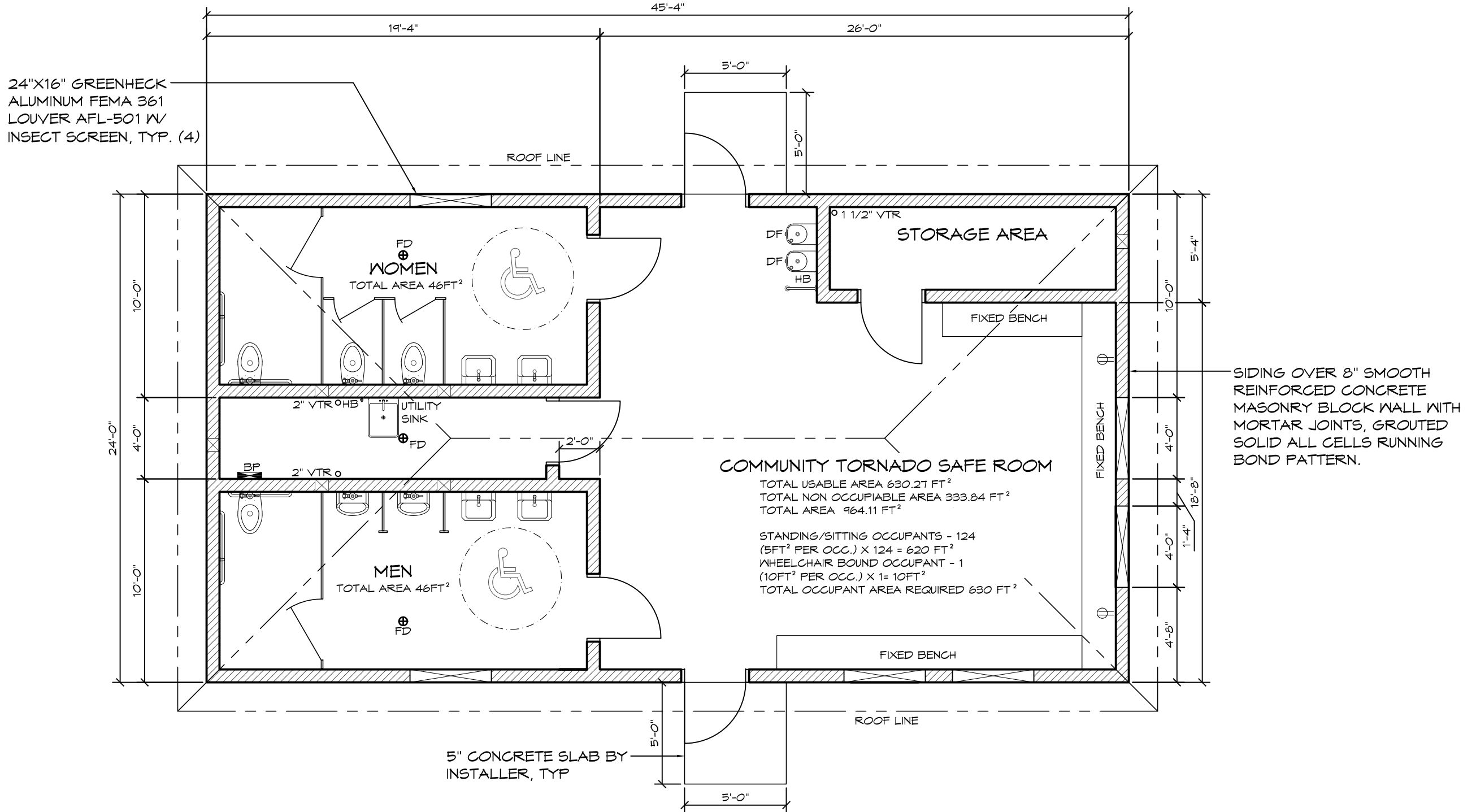
CODE SUMMARY:
 OCCUPANCY TYPE: A3
 CONSTRUCTION: VB
 AREA: 1088 SQ FT
 AREA ALLOWABLE: 6,000 SQ FT
 HEIGHT: 1 STORY
 HEIGHT ALLOWABLE: 1 STORY
 OCCUPANT LOAD (EMERGENCY): 125

DESIGN LOADS
 ROOF: LIVE LOAD 100 PSF
 ROOF: DEAD LOAD 50 PSF
 WALL DEAD LOAD 81 PSF
 IBC SEISMIC DESIGN CATEGORY E
 DESIGN WIND SPEED 250 MPH, EXPOSURE C
 ALLOWABLE SOIL BEARING 1500 PSF

Model 2905

WALL TYPE SCHEDULE

 8" CONCRETE MASONRY BLOCK WALL WITH MORTAR JOINTS GROUTED SOLID ALL CELLS RUNNING BOND PATTERN



1 FLOOR PLAN
 SCALE: 3/16 = 1'-0"
 PLAN NORTH

© 2014 ROMTEC, INC. ALL RIGHTS RESERVED. THESE PLANS AND DRAWINGS MAY NOT BE REPRODUCED, ADAPTED OR FURTHER DISTRIBUTED, AND NO BUILDINGS MAY BE CONSTRUCTED FROM THESE PLANS, WITHOUT THE WRITTEN PERMISSION OF ROMTEC, INC.

ROMTEC
 18240 NORTH BANK ROAD - ROSEBURG, OR 97470
 (541) 496-3541 FAX (541) 496-0803

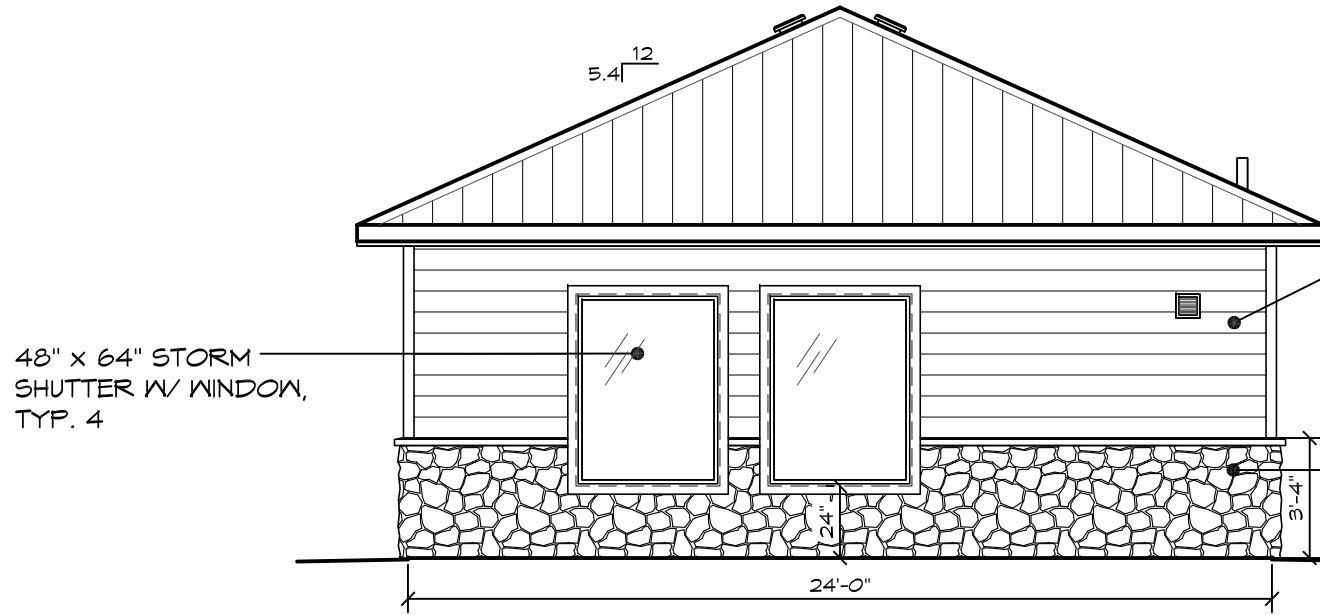
PRELIMINARY

PROJECT: STORM 002
STORM SHELTER 002
 XXXX
 XXXX

SHEET TITLE: FLOOR PLAN

PROJECT#:	STORM 2	
MODEL#:	2081	
DATE:	00/00/14	
REVISIONS		
REV.	DATE	BY
1	11-12-2014	CR
DRAWN BY:	TH	

Model 2905

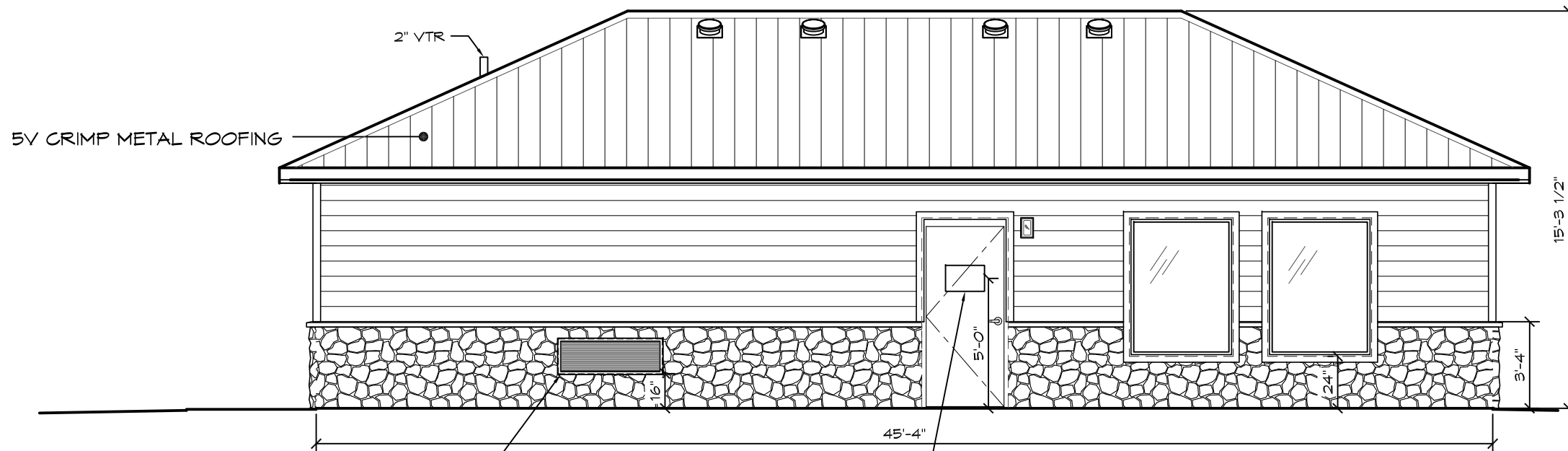


1 EAST ELEVATION
SCALE: 3/16" = 1'-0"

FIBER CEMENT LAP SIDING ABOVE ROCK VENEER OVER 8" REINFORCED CONCRETE MASONRY BLOCK WALL WITH MORTAR JOINTS, GROUTED SOLID ALL CELLS RUNNING BOND PATTERN.

3'-4" LAVA ROCK VENEER OVER 8" REINFORCED CONCRETE MASONRY BLOCK WALL WITH MORTAR JOINTS, GROUTED SOLID ALL CELLS RUNNING BOND PATTERN.

48" x 64" STORM SHUTTER W/ WINDOW, TYP. 4



2 SOUTH ELEVATION
SCALE: 3/16" = 1'-0"

48"X16" GREENHECK ALUMINUM FEMA 361 LOUVER AFL-501 W/ INSECT SCREEN, TYP. (2)

18"X12" TORNADO SAFE ROOM DESIGN PER SECTION 504, PROVIDE AT EACH ENTRANCE, TYP. (2)

© 2014 ROMTEC, INC. ALL RIGHTS RESERVED. THESE PLANS AND DRAWINGS MAY NOT BE REPRODUCED, ADAPTED OR FURTHER DISTRIBUTED, AND NO BUILDINGS MAY BE CONSTRUCTED FROM THESE PLANS, WITHOUT THE WRITTEN PERMISSION OF ROMTEC, INC.

ROMTEC
18240 NORTH BANK ROAD - ROSEBURG, OR 97470
(541) 496-3541 FAX (541) 496-0803
PRELIMINARY

PROJECT: STORM 002
PROJECT#: STORM 2
MODEL#: 2081
DATE: 00/00/14
REVISIONS

REV.	DATE	BY
1	11-12-2014	CR

DRAWN BY: TH
SHEET TITLE: ELEVATIONS