

**CODE SUMMARY:**

OCCUPANCY TYPE: A3  
 CONSTRUCTION: VB  
 AREA: 441 SQ FT  
 AREA ALLOWABLE: 6,000 SQ FT  
 HEIGHT: 1 STORY  
 HEIGHT ALLOWABLE: 1 STORY  
 OCCUPANT LOAD (EMERGENCY): 49

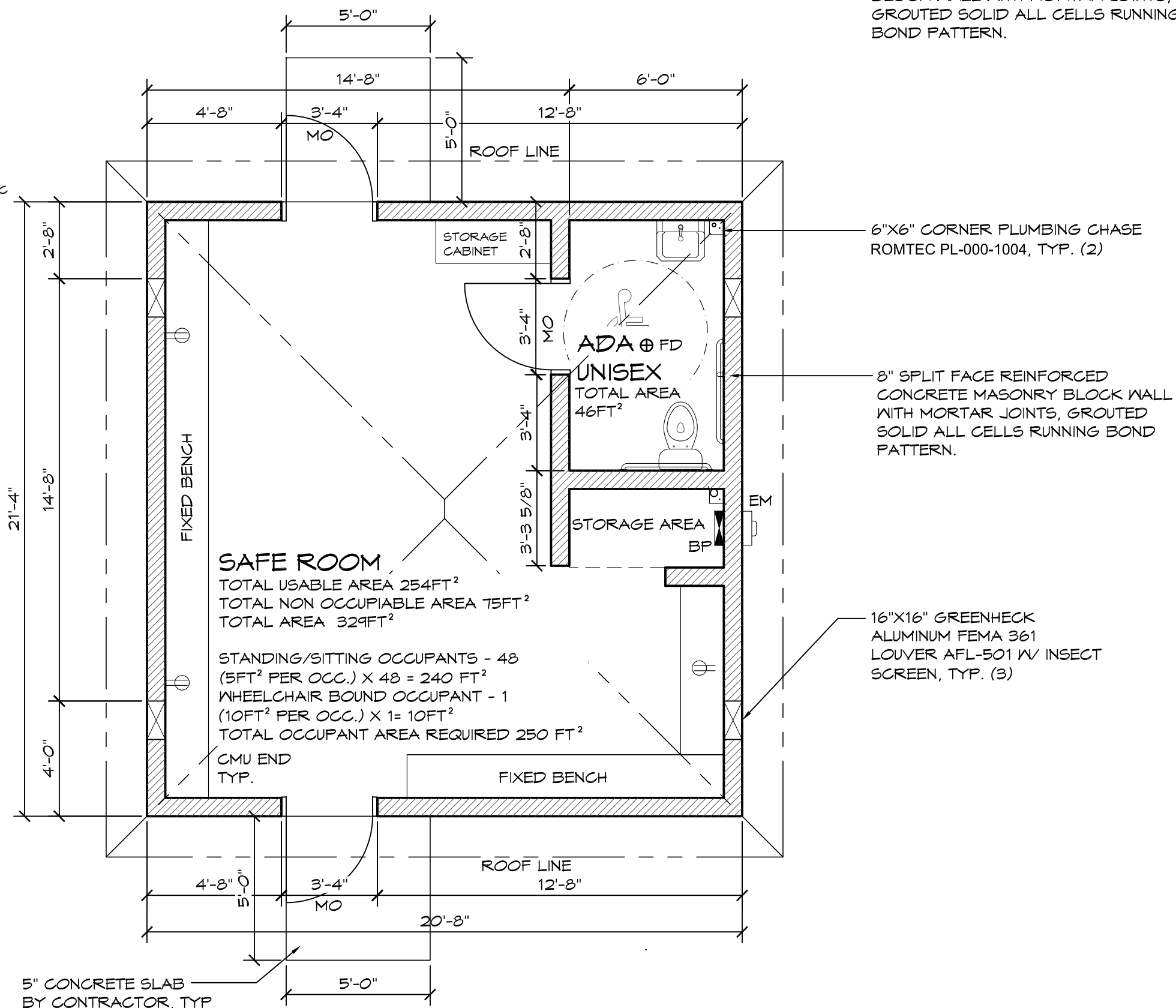
# Model 2901

**DESIGN LOADS**

ROOF: LIVE LOAD 100 PSF  
 ROOF: DEAD LOAD 50 PSF  
 WALL DEAD LOAD 81 PSF  
 IBC SEISMIC DESIGN CATEGORY E  
 DESIGN WIND SPEED 250 MPH, EXPOSURE C  
 ALLOWABLE SOIL BEARING 1500 PSF

## WALL TYPE SCHEDULE

 8" REINFORCED CONCRETE MASONRY BLOCK WALL WITH MORTAR JOINTS, GROUTED SOLID ALL CELLS RUNNING BOND PATTERN.



**1 FLOOR PLAN**  
 SCALE: 1/4" = 1'-0"

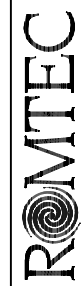


**PRELIMINARY**

© 2014 ROMTEC, INC. ALL RIGHTS RESERVED. THESE PLANS AND DRAWINGS MAY NOT BE REPRODUCED, ADAPTED OR FURTHER DISTRIBUTED, AND NO BUILDINGS MAY BE CONSTRUCTED FROM THESE PLANS, WITHOUT THE WRITTEN PERMISSION OF ROMTEC, INC.

PROJECT: 2643 - UTILITY BUILDING		
STORM SHELTER		
TORNADO ALLEY, MIDDLE AMERICA		
SHEET TITLE: FLOOR PLAN		
PLAN SET#	XXXXXX	
DATE:	7/16/14	
REV.	DATE:	BY:
DRAWN BY: CR		

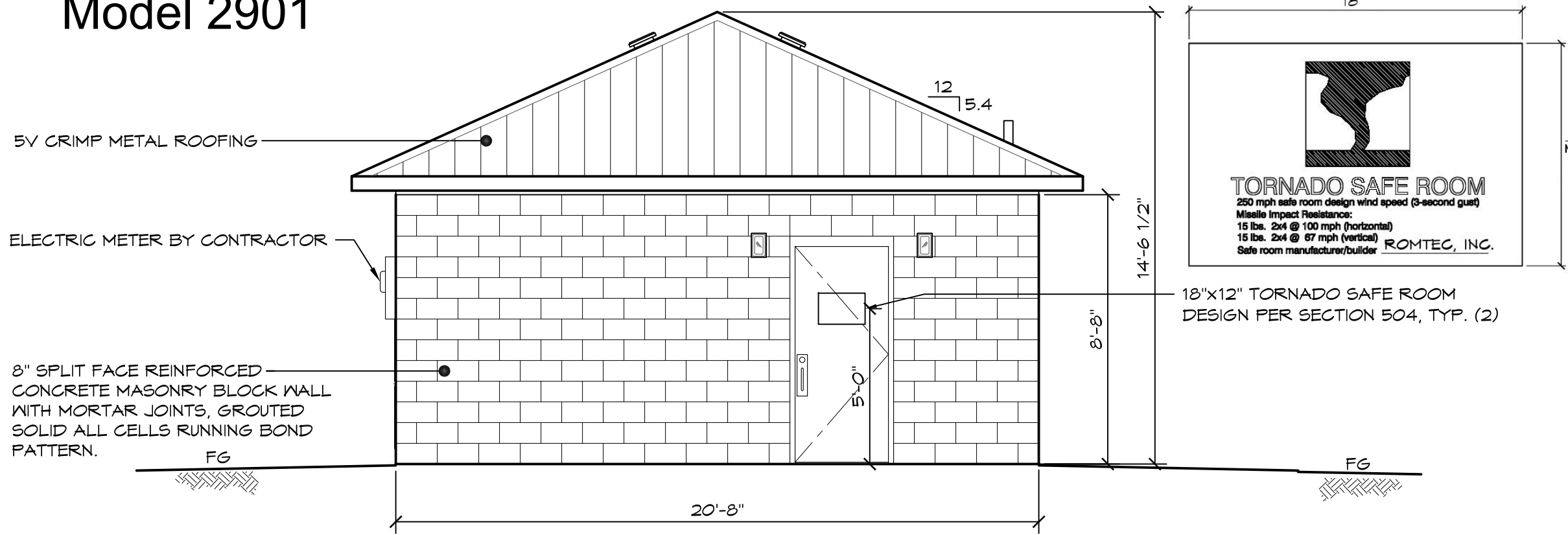
18240 NORTH BANK ROAD  
 ROSEBURG, OR 97470  
 (541)-486-3541 FAX (541)-486-0803



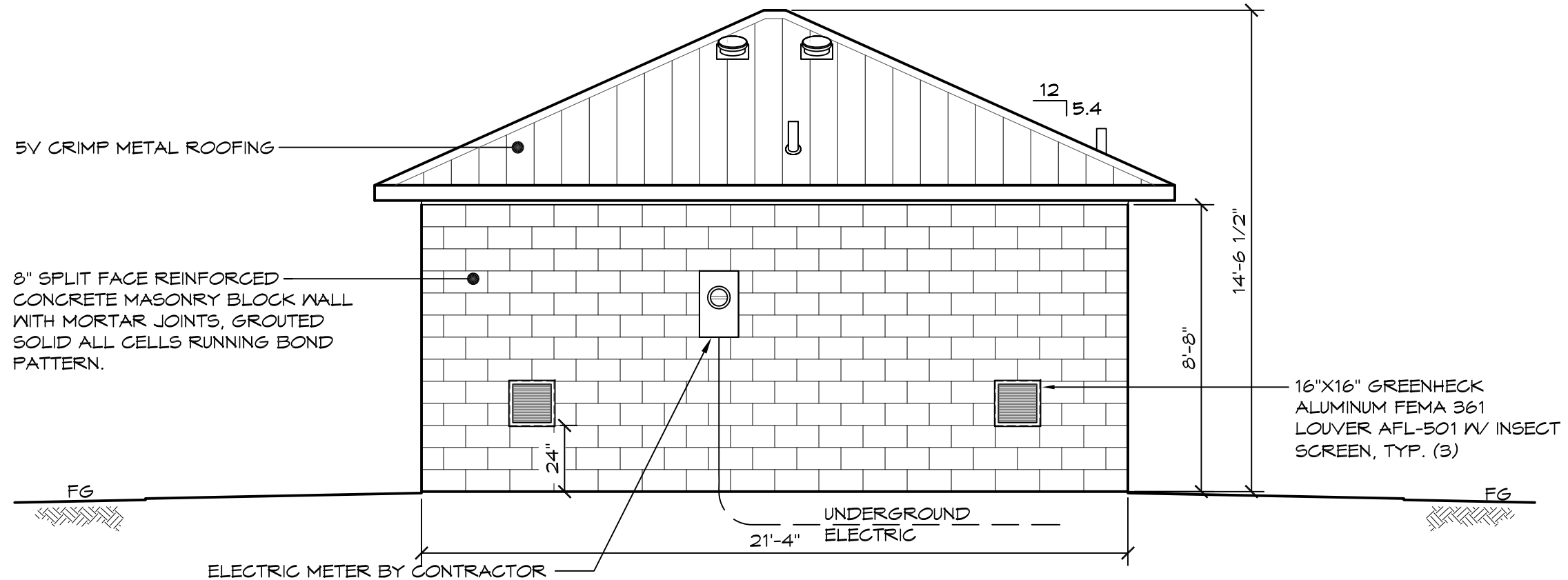
SHEET NO.

1

# Model 2901



**1 NORTH ELEVATION**  
SCALE: 1/4" = 1'-0"



**2 EAST ELEVATION**  
SCALE: 1/4" = 1'-0"

**PRELIMINARY**

© 2014 ROMTEC, INC. ALL RIGHTS RESERVED. THESE PLANS AND DRAWINGS MAY NOT BE REPRODUCED, ADAPTED OR FURTHER DISTRIBUTED, AND NO BUILDINGS MAY BE CONSTRUCTED FROM THESE PLANS, WITHOUT THE WRITTEN PERMISSION OF ROMTEC, INC.

PROJECT: 2643 - UTILITY BUILDING		
STORM SHELTER		
TORNADO ALLEY, MIDDLE AMERICA		
SHEET TITLE: EXTERIOR ELEVATIONS		
PLAN SET#	XXXXXX	
DATE:	7/16/14	
REV.	DATE:	BY:
DRAWN BY: CR		

18240 NORTH BANK ROAD  
ROSEBURG, OR 97470  
(541)-486-3541 FAX (541)-486-0803



SHEET NO.

2