

# AMERICA'S **GREEN** RESTROOMS

- Public Restrooms & Showers
- SST® Waterless Restrooms
- Shelters & Pavilions

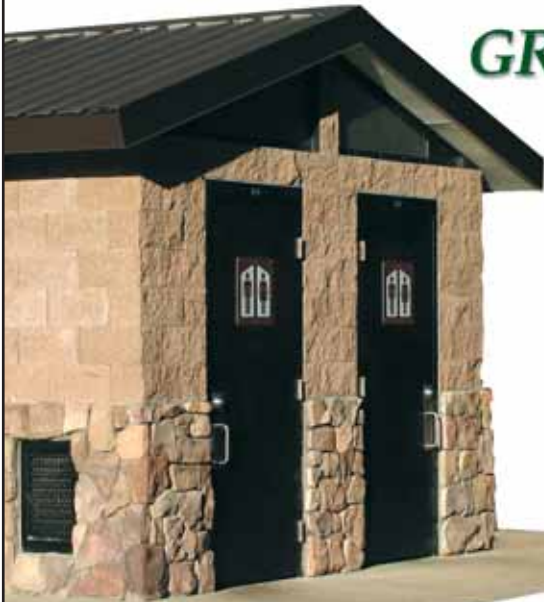
- Concession & Storage
- Multi-Use Facilities
- Kiosks & Booths



## **EVERGREEN™** SUSTAINABLE BUILDINGS by ROMTEC

### **GREEN PUBLIC FACILITIES**

- High-Efficiency & Waterless Plumbing Fixtures
- High-Efficiency Electrical Fixtures & Systems
- Energy Efficient Insulation & Construction
- LEED Certification Advising & Assistance
- Sustainable Materials & Manufacturing
- Complete Plans For All 50 States
- Hundreds of Designs
- Turnkey Installation Available



Restrooms & Shower Buildings



Restroom-Concession



Multi-Use Facilities

Visit our website for drawings, photos, specs. & quotes.

**ROMTEC**  
[www.romtec.com](http://www.romtec.com)  
**541-496-3541**

18240 North Bank Road  
Roseburg, OR 97470  
[service@romtec.com](mailto:service@romtec.com)



Contract GS-07F-0095M

**MANY STATE CONTRACTS**

© SST is a registered trademark of Romtec, Inc. © Copyright 2009, Romtec, Inc. All rights reserved.

# ROMTEC

Romtec's **EVERGREEN™** buildings offer many features to achieve resource efficiency and sustainability.

For information on the complete Romtec line, call **541-496-3541** or visit **www.romtec.com**.

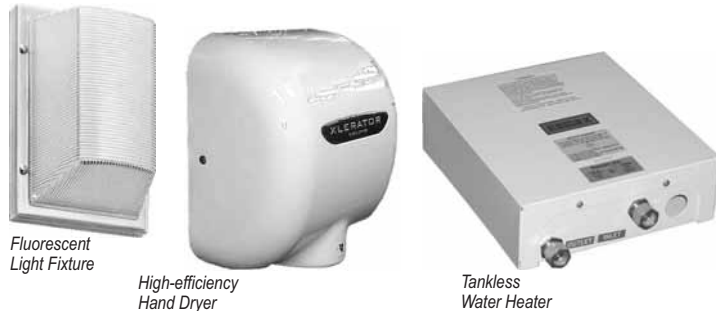
ROMTEC, INC. ■ 18240 North Bank Road ■ Roseburg, OR 97470 ■ 541-496-3541 ■ Fax: 541-496-0803 ■ Email: [service@romtec.com](mailto:service@romtec.com)



High-efficiency Toilet & Flush Valve

Waterfree Urinal

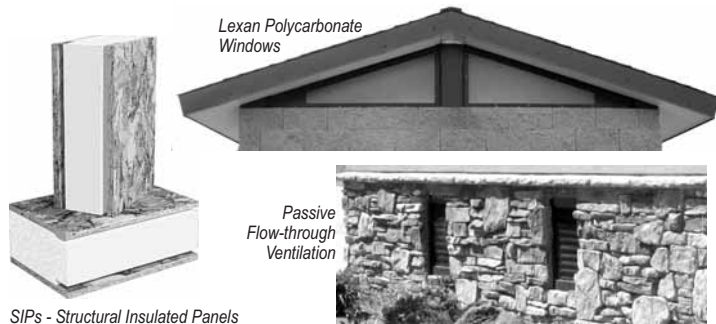
Water-saving Touchless Faucet



Fluorescent Light Fixture

High-efficiency Hand Dryer

Tankless Water Heater



Lexan Polycarbonate Windows

Passive Flow-through Ventilation

SIPs - Structural Insulated Panels



Detailed Documentation - print and electronic

AutoCAD plans - print and electronic



# EVERGREEN™ SUSTAINABLE BUILDINGS

- Public Restrooms & Showers
- Restroom/Concession & Storage Buildings
- SST® Waterless Restrooms
- Multi-Use Facilities
- Shelters, Pavilions, Kiosks & Booths

## High-Efficiency & Waterless Plumbing Fixtures

Choose plumbing fixtures that meet your water consumption goals.

- **Water-saving Toilets:** standard 1.6 gpf, optional high-efficiency toilets (1.28 gpf); vitreous china or stainless steel
- **Water-saving Urinals:** standard 1.0 gpf, optional high-efficiency urinals (0.5 gpf), optional waterfree urinals; vitreous china or stainless steel
- **Water-saving Faucets** (0.5 gpm - 1.5 gpm) and **Shower Heads** (2.0 gpm)
- **Touchless Fixtures:** reduced water use and improved sanitation

## High-Efficiency Electrical Fixtures & Systems

Electrical fixtures and systems designed for low energy usage and long life.

- **Long-Life Fluorescent Light Fixtures:** 400 lumen output/7 watt lamp; optional shield reduces upward light projection (light pollution)
- **Photo Eye and Motion Lighting Controls:** light when you need it
- **High-Efficiency Hand Dryers:** dry hands quickly, reduce paper waste
- **High-Efficiency Water & Space Heating Systems:** electric, gas and solar; tank-type and tankless water heat; wall and in-floor space heat

## Energy Efficient Insulation & Construction

Buildings designed for comfort, energy efficiency and equipment protection.

- **SIP (Structural Insulated Panels):** expanded polystyrene roof panels with min. R-23 insulation; available SIP wall construction
- **Cold Weather Insulation:** available rigid foam over CMU walls; available concrete slab insulation
- **Lexan Polycarbonate Windows:** available double glazing
- **Passive Flow-through Ventilation:** kick-proof steel fresh air vents

## LEED Certification Advising & Assistance

Professional, hands-on service to help you achieve LEED (Leadership in Energy and Environmental Design) certification.



- **Detailed Documentation:** We support your LEED application with specifications on every building detail, from design to completion.
- **Architectural Designs for Efficiency, Quality & Durability:** Great-looking buildings, designed for efficiency and built to last.



# EVERGREEN™ SUSTAINABLE BUILDINGS

Romtec offers the widest range of pre-engineered facilities to meet your needs. With our **EVERGREEN™** buildings, you get complete architectural design and manufacturing devoted to high quality, low maintenance, long life and resource efficiency.

Let us help you get the best buildings for your next project.

We welcome your call.

**541-496-3541**

**ROMTEC** [www.romtec.com](http://www.romtec.com)



Solar Electric Panels

Solar Hot Water Panels

Solar LED Light with PV Panel and Battery



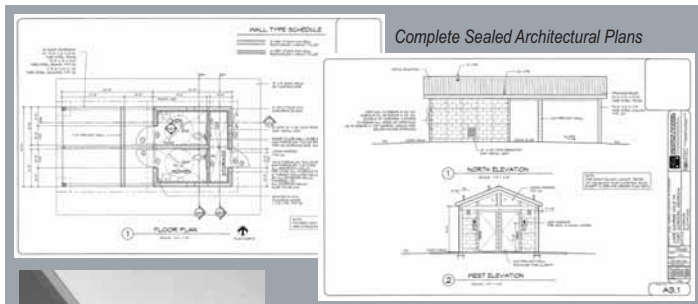
Radiant Floor Heat (under construction)



Long-lasting Roofing (choice of metal, three-tab, tile)

Long-lasting Powder-coated Steel Hardware

Panelized Roof Construction



Complete Sealed Architectural Plans



Turnkey Installation Available



## Solar Electric & Solar Thermal Systems

From LED lights to grid-tied photovoltaic systems to solar water/space heat.

- **Solar-powered LED Lights:** complete kits with PV panel, battery, lights
- **Solar Electric:** complete grid-tied or off-grid systems with roof-mounted PV panels, inverter and service panel, batteries with charge controller
- **Solar Hot Water Systems:** complete active and passive systems tied to hot water tank or tankless water heater (electric, gas or propane)
- **Solar Space Heat Systems:** radiant floor heat from hot water system

## Sustainable Materials & Manufacturing

Buildings produced with environmentally sustainable products and methods.

- **Concrete Materials:** flyash content concrete, CMUs (concrete blocks) and grout; exterior wall finishes of split-face and smooth-face CMU, fiber-cement lap siding, cultured and native stone
- **Panelized Roof Construction:** fast installation, no waste
- **Long-lasting Roofing:** high percentage of recycled content
- **Long-lasting Hardware:** steel doors, windows, vents, grab bars

## Hundreds of Complete Plans for All 50 States

Choose from our standard models or let us help you create your own designs.

- **Make Any Building Evergreen:** include sustainable fixtures, systems and materials in any Romtec building, standard or custom.
- **Buildings Include Sealed Architectural Plans:** complete with all submittals, schedules, construction and installation details
- **Our Designs Meet All Your Building Codes:** all structural, all plumbing, all electrical, all mechanical, all environmental

## Professional Installation Services

Your building project goes smoothly with our professional installation services.

- **Turnkey Installation Available:** We can handle every installation detail.
- **Free Construction Cost Estimates:** We provide expert estimating.
- **Contractor Referral Service:** We'll refer you to qualified contractors.
- **Free Technical Service:** Our professional staff is available to assist with every phase of installation.