

Texas Restroom-Concession *Finished to match existing structure*

Coppell, Texas, is a growing town of 40,000 in the heart of the Dallas-Ft. Worth metro area. Most of the development is new, as commuters to the larger cities settle in the former farming community to raise their families.

To serve this young population, the Coppell Parks and Recreation Department operates about a dozen city parks, along with an aquatic and recreation center and a brand-new tennis center. It offers a wide variety of athletic programs throughout the year for all ages and skill levels.

Many of those programs take place at 153-acre Wagon Wheel Park, one of the city's largest. The eastern section of the park is busy with soccer and baseball games, and has a large concession and restroom building to serve those crowds.

A creek divides the eastern section of the park from a smaller parcel to the west. That portion of the park, accessed through a separate vehicle entrance and pedestrian bridge, is the site of two ballfields. The Coppell parks department decided to make that side of the park user-friendlier by providing a restroom facility with a concession space.

An important consideration was making the new restroom-concession building match existing structures in the park, whose exteriors are finished in the masonry style of old homestead buildings from Texas' frontier days. This

was accomplished by working with local supplier Tejas Textured Stone. The company's "Austin Stone" product in "Texas Cream" color is a perfect match.

Romtec was able to provide a pre-engineered structure that met the city's requirements while allowing for the customization it needed. "We contacted Romtec, defined the scope of the project, and went on from there," says John Elias, park operations manager.

The custom Romtec Sierra IV building features men's and women's restrooms, each with skylights and commercial grade fixtures. A mechanical room houses all piping and the hot water system. The concession area has a stainless steel roll-up window with stainless counter, a three-sink wash area and an ice machine. The concession space is air-conditioned. A storage area provides room for park electrical equipment and supplies.

"Putting the building up was really easy—effortless, almost," says Larry Frazier of the Fain Group, the contractor on the job.

The building's exterior, finished with the Austin stone, provides a sense of continuity with the other structure in the park. "This pre-engineered building was a new experience for us; it was the first time we'd ever done one of them," Elias says. "We made a few little adjustments, but in general, it worked out really well."



Photos

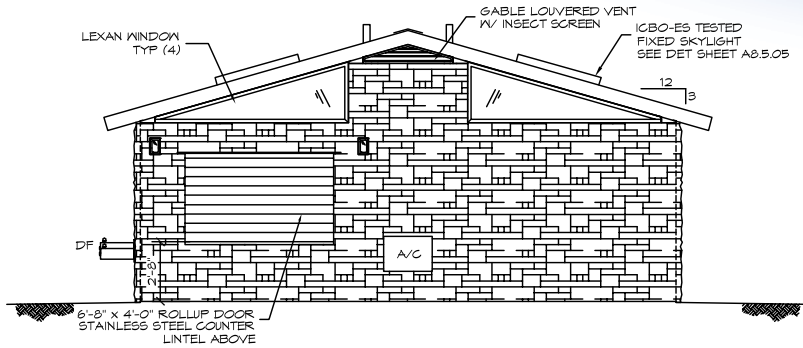
Top: Close up of Tejas Textured Stone masonry product.

Middle: Restroom end of new Romtec building.

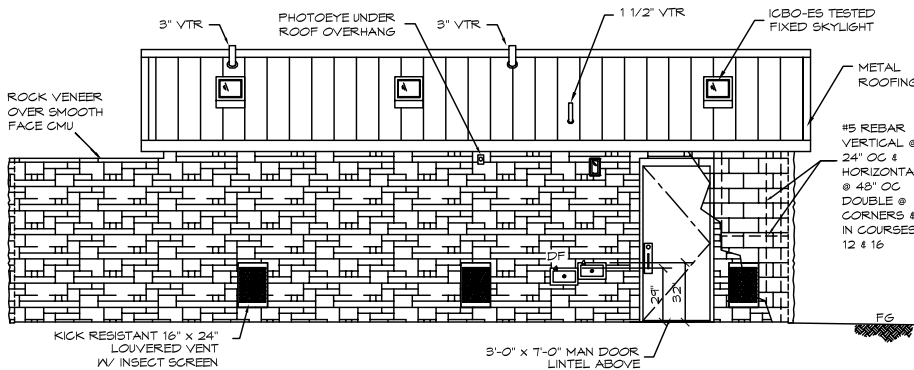
Bottom: Existing building with stone exterior finish.



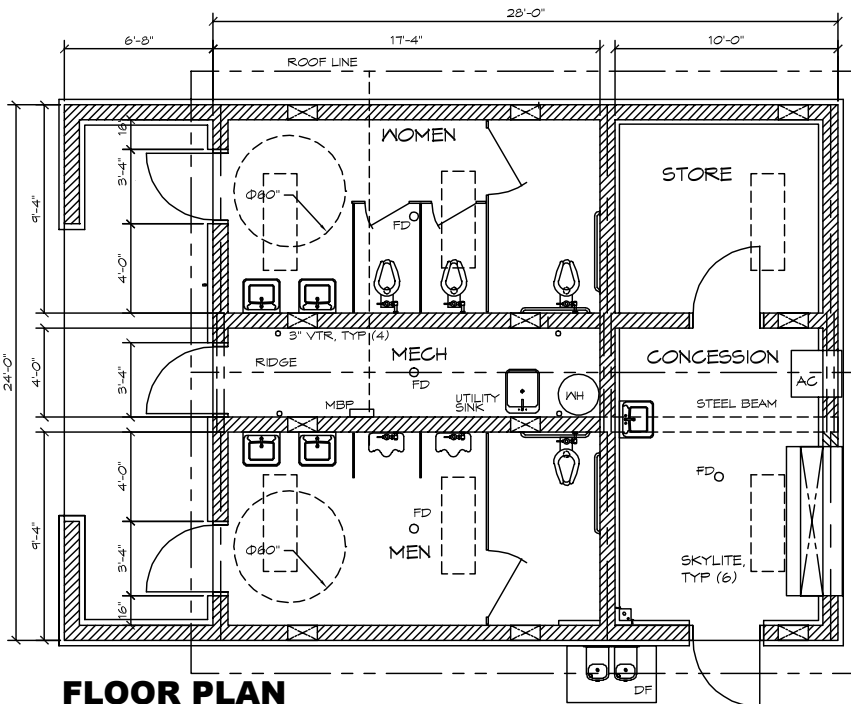
New Romtec restroom-concession building.



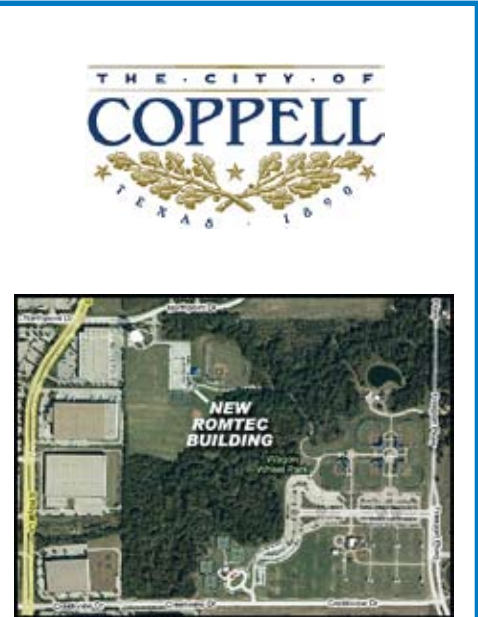
CONCESSION END ELEVATION



SIDE ELEVATION



FLOOR PLAN



New Romtec building located in west park area.



Restroom entry with louver/ screen vent above.



Concession space entry and roll-up curtain window.