

Sierra IV+ Multi-User Restrooms with Six Showers

Side Entrance - Value/Concrete (24' x 34-8')

NTS - PRELIMINARY NOT FOR CONSTRUCTION

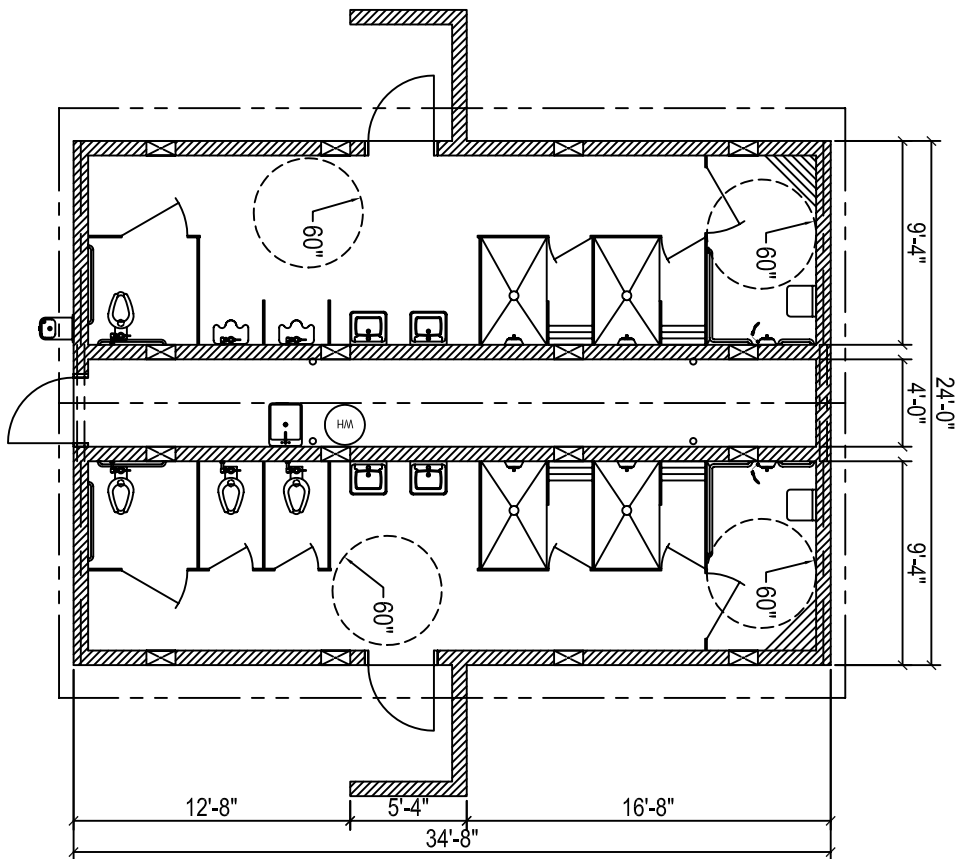
STANDARD ITEMS IN SIERRA VALUE/CONCRETE BUILDING PACKAGE:

WALLS: 8" DRY-STACK CMU (concrete filled & steel reinforced), BROWN OR GRAY COLOR, SPLIT OR SMOOTH EXTERIOR FINISH, PREFAB ROOF PANELS: 6" STEEL FRAME, 16" O.C., 3/4" CDX PLY. EXT. SHEATHING, R-19 INSULATION, WHITE FRP CEILING ON 1/2" OSB. ROOFING: H-RIB METAL ROOFING & TRIM OVER ROOFING FELT, MOCHA (dark brown) COLOR, OPTIONAL ROOFING COLORS AVAILABLE. INTERIOR FINISH: WHITE FRP ON WALLS & VAULTED CEILING, UNFINISHED INTERIOR MECHANICAL ROOM WALLS. DOORS & FRAMES: 3'-0" x 7'-0" GALV. STEEL DOOR, HONEYCOMB CORE 2" FRAME, POWDERCOATED BLACK; COMMERCIAL HARDWARE. WINDOWS: TRANSLUCENT LEXAN IN STEEL FRAME, POWDERCOATED BLACK. SKYLIGHTS: RECTANGULAR IN ANODIZED ALUMINUM FRAME, STD. IN SIERRA III & IV, OPTIONAL IN SIERRA I, II & STRETCH; WALL VENTS: EXPANDED STEEL MESH OVER GALV. LOUVERS W/ INSECT SCREEN IN STEEL FRAME, POWDERCOATED BLACK.

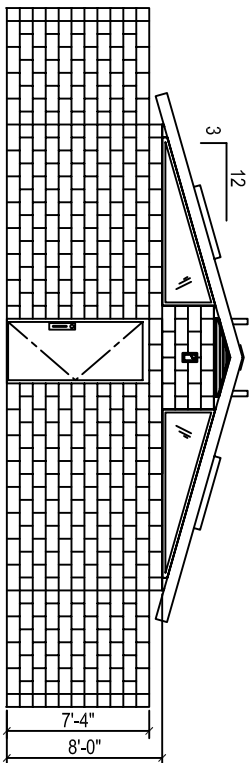
AVAILABLE FEATURE PACKAGES:
 PLUMBING: CHINA OR STAINLESS STEEL FIXTURES, GRAB BARS, MIRRORS; STALL PARTITIONS & DOORS; SHOWER FIXTURES. ELECTRICAL: INTERIOR & EXTERIOR LIGHTS, PHOTOEYE, MAIN BREAKER PANEL.

OPTIONS (must be on quote to be supplied):
 SIGNS, PAPER & SOAP DISPENSERS, WASTE RECEPTACLES, DIAPER CHANGING STATIONS, LAV SHELDS (lavatory, pipe insulation boots), COMFORT HEAT, HAND DRYERS, WATER HEATER PKG., DOOR CLOSERS, ELECT. DOOR LOCKS, CONCESSION COUNTER & ROLL-UP WINDOW, ROOF EXTENSION, 3-TAB COMPOSITION OR CEDAR ROOFING, CUSTOM EXTERIORS (wood, stucco, fiber-cement, masonry).

IMPORTANT: REFER TO QUOTE AND SPEC. FOR THE ITEMS INCLUDED WITH YOUR BUILDING PACKAGE.

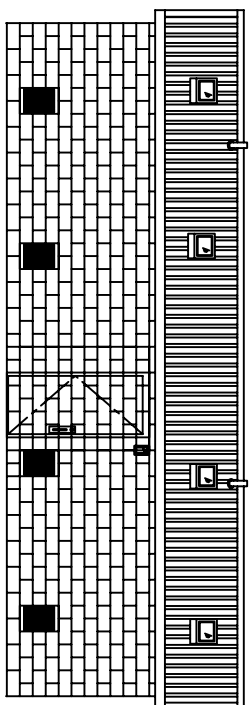
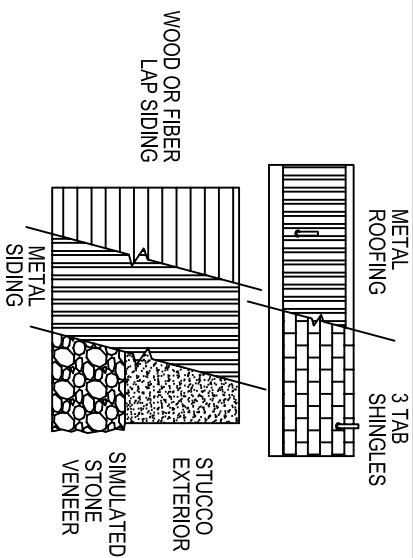


FLOOR PLAN



FRONT VIEW

ROOFING CHOICES AND OPTIONAL EXTERIORS



SIDE VIEW



18240 NORTH BANK ROAD - ROSEBURG, OR 97470
 (541) 496-3541 info@romtec.com
 www.romtec.com

MODEL:

2101

DATE

MM/DD/YY

REVISIONS

DATE

BY

DRAWN BY:

FB

SHEET NO.

A2.1