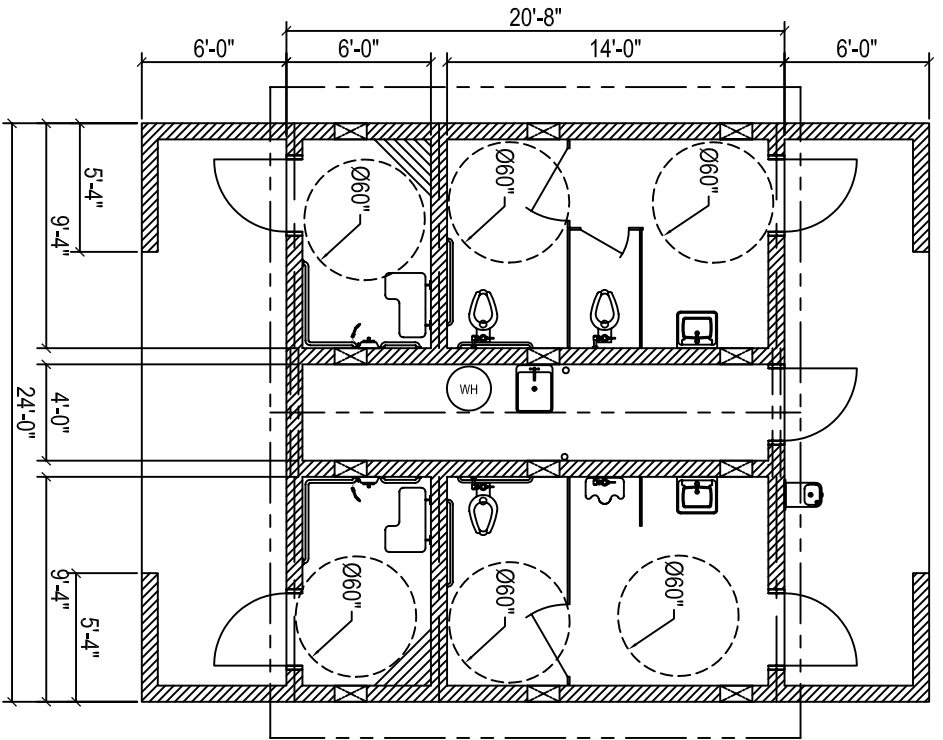


Sierra III Multi-User Restrooms with Two Private Entrance Showers-Value/Concrete (24'-0" x 20'-8")

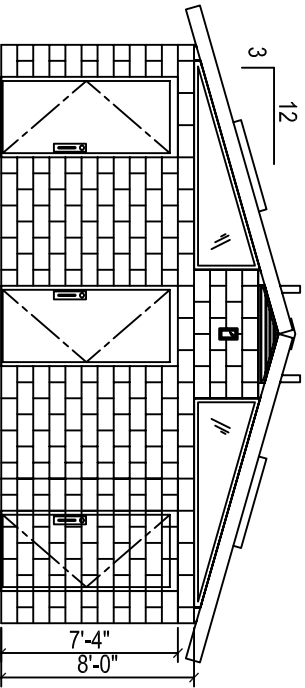
NTS - PRELIMINARY NOT FOR CONSTRUCTION

STANDARD ITEMS IN SIERRA VALUE/CONCRETE BUILDING PACKAGE:

WALLS: 8" DRY-STACK CMU (concrete filled & steel reinforced), BROWN OR GRAY COLOR, SPLIT OR SMOOTH EXTERIOR FINISH.
 PREFAB ROOF PANELS: 6" STEEL FRAME, 16" O.C., 3/4" CDX P.L.Y. EXT. SHEATHING, R-19 INSULATION, WHITE FRP CEILING ON 1/2" OSB.
 ROOFING: H-HRIB METAL ROOFING & TRIM OVER ROOFING FELT, MOCHA (dark brown) COLOR, OPTIONAL ROOFING COLORS AVAILABLE.
 INTERIOR FINISH: WHITE FRP ON WALLS & VAULTED CEILING, UNFINISHED INTERIOR MECHANICAL ROOM WALLS.
 DOORS & FRAMES: 3'-0" x 7'-0" GALV. STEEL DOOR, HONEYCOMB CORE, 2" FRAME, POWDERCOATED BLACK; COMMERCIAL HARDWARE
 WINDOWS: TRANSLUCENT LEXAN IN STEEL FRAME, POWDERCOATED BLACK.
 SKYLIGHTS: RECTANGULAR IN ANODIZED ALUMINUM FRAME, STD. IN SIERRA III & IV, OPTIONAL IN SIERRA & PIONEER I, II & STRETCH.
 WALL VENTS: EXPANDED STEEL MESH OVER GALV. LOUVERS W/ INSECT SCREEN IN STEEL FRAME, POWDERCOATED BLACK.
AVAILABLE FIXTURE PACKAGES:
 PLUMBING: CHINA OR STAINLESS STEEL, FIXTURES, GRAB BARS, MIRRORS, STALL PARTITIONS & DOORS, SHOWER FIXTURES, ELECTRICAL, INTERIOR & EXTERIOR LIGHTS, PHOTOEYE, MAIN BREAKER PANEL.
OPTIONS (must be on quote to be supplied):
 SIGNS, PAPER & SOAP DISPENSERS, WASTE RECEPTACLES, DIAPER CHANGING STATIONS, LAVY SHIELDS (lavatory pipe insulation boots), COMFORT HEAT, HAND DRYERS, WATER HEATER PKG., DOOR CLOSERS, ELECT. DOOR LOCKS, CONCESSION COUNTER & ROLL-UP WINDOW, ROOF EXTENSION, 3-TAB COMPOSITION OR CEDAR ROOFING, CUSTOM EXTERIORS (wood, stucco, fiber-cement, masonry).
IMPORTANT: REFER TO QUOTE AND SPEC. FOR THE ITEMS INCLUDED WITH YOUR BUILDING PACKAGE.

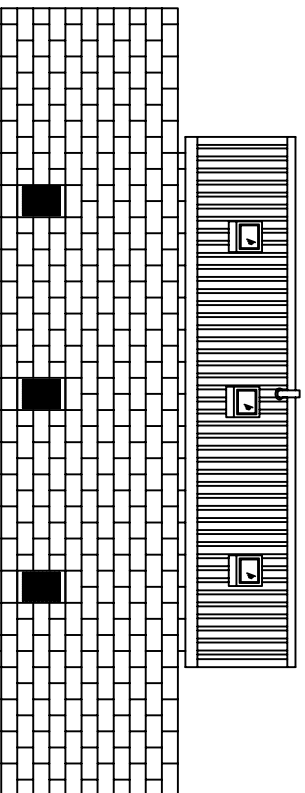
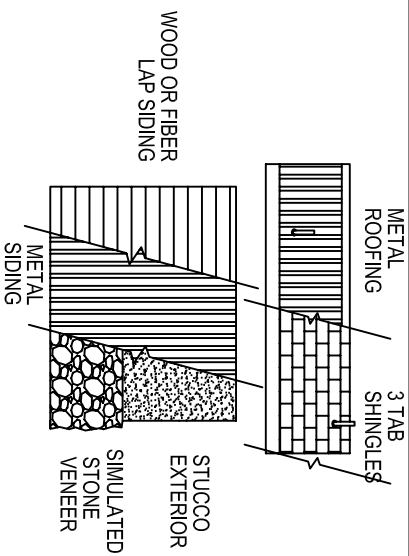


FLOOR PLAN



FRONT VIEW

ROOFING CHOICES AND OPTIONAL EXTERIORS



SIDE VIEW

MODEL:

2070

DATE

MM/DD/YY

REVISIONS

DATE BY

DATE BY

DATE BY

DRAWN BY: FB

SHEET NO.

A2.1

ROMTEC

18240 NORTH BANK ROAD - ROSEBURG, OR 97470
 (541)-496-3541 info@romtec.com
 www.romtec.com