

Sierra IV Single-User Restrooms w/Side Concession & Storage Rooms-Value/Concrete (24'-0" x 18'-0")

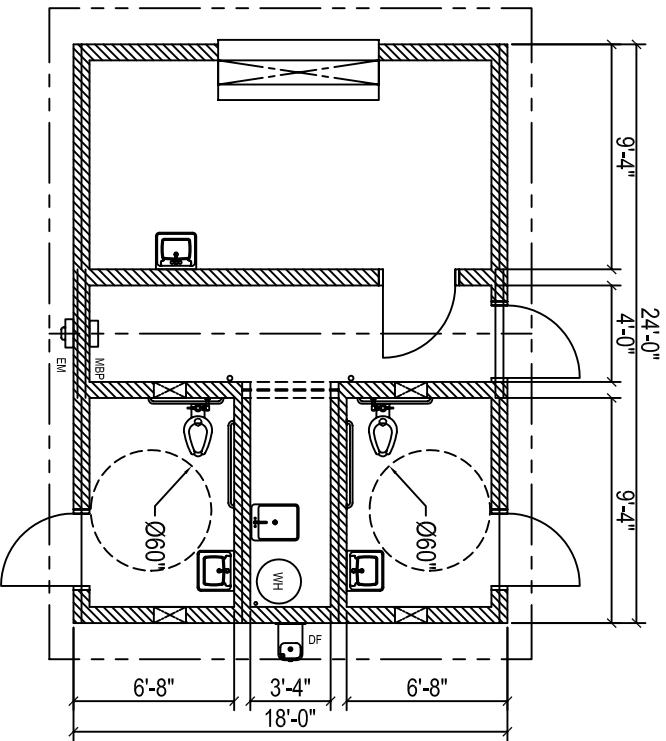
NTS - PRELIMINARY NOT FOR CONSTRUCTION

STANDARD ITEMS IN SIERRA VALUE/CONCRETE BUILDING PACKAGE:

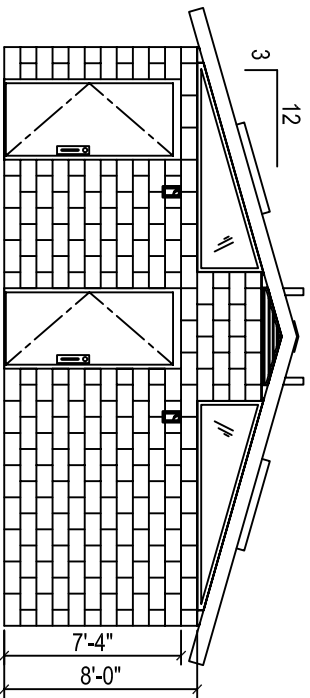
WALLS: 8" DRY-STACK CMU, (concrete filled & steel reinforced), BROWN OR GRAY COLOR, SPILT OR SMOOTH EXTERIOR FINISH.
 PREFAB ROOF PANELS: 6" STEEL FRAME, 16" O.C., 3/4" CDX P.L.Y. EXT. SHEATHING, R-19 INSULATION, WHITE FRP GELING ON 1/2" OSB.
 ROOFING: HR18 METAL ROOFING & TRIM OVER ROOFING FELT, MOCHA (dark brown) COLOR, OPTIONAL ROOFING COLORS AVAILABLE.
 INTERIOR FINISH: WHITE FRP ON WALLS & VAULTED CEILING, UNFINISHED INTERIOR MECHANICAL ROOM WALLS.
 DOORS & FRAMES: 3'-0" x 7'-0" GALV. STEEL DOOR, HONEYCOMB CORE, 2" FRAME, POWDERCOATED BLACK; COMMERCIAL HARDWARE
 WINDOWS: TRANSLUCENT LEXAN IN STEEL FRAME, POWDERCOATED BLACK.
 SKYLIGHTS: RECTANGULAR IN ANODIZED ALUMINUM FRAME, STD. IN SIERRA III & IV, OPTIONAL IN SIERRA & PIONEER I, II & STRETCH.
 WALL VENTS: EXPANDED STEEL MESH OVER GALV. LOUVERS W/ INSECT SCREEN IN STEEL FRAME, POWDERCOATED BLACK.
AVAILABLE FIXTURE PACKAGES:
 PLUMBING: CHINA OR STAINLESS STEEL FIXTURES, GRAB BARS, MIRRORS, STALL PARTITIONS & DOORS, SHOWER FIXTURES, ELECTRICAL: INTERIOR & EXTERIOR LIGHTS, PHOTOEYE, MAIN BREAKER PANEL.

OPTIONS (must be on quote to be supplied):

SIGNS, PAPER & SOAP DISPENSERS, WASTE RECEPTACLES, DIAPER CHANGING STATIONS, LAV SHIELDS (lavatory pipe insulation boots), COMFORT HEAT, HAND DRYERS, WATER HEATER PKG., DOOR CLOSERS, ELECT. DOOR LOCKS, CONCESSION COUNTER & ROLL-UP WINDOW, ROOF EXTENSION, 3-TAB COMPOSITION OR CEDAR ROOFING, CUSTOM EXTERIORS (wood, stucco, fiber-cement, masonry).
IMPORTANT: REFER TO QUOTE AND SPEC. FOR THE ITEMS INCLUDED WITH YOUR BUILDING PACKAGE.

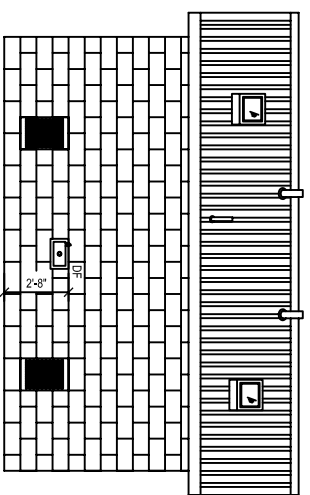
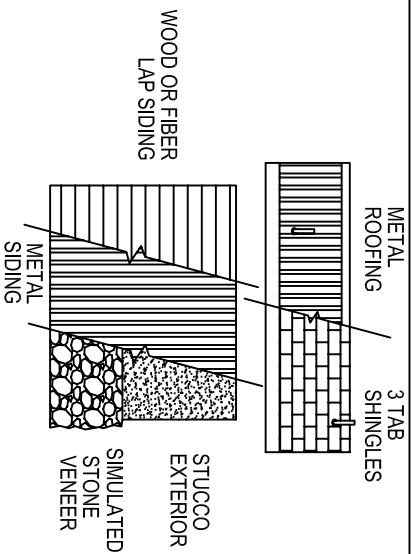


FLOOR PLAN



FRONT VIEW

ROOFING CHOICES AND OPTIONAL EXTERIORS



SIDE VIEW

MODEL:

2086

DATE

MM/DD/YY

REVISIONS

DATE

BY

DRAWN BY:

FB

SHEET NO.

A2.1

ROMTEC

18240 NORTH BANK ROAD - ROSEBURG, OR 97470
 (541)-496-3541 info@romtec.com
 www.romtec.com