

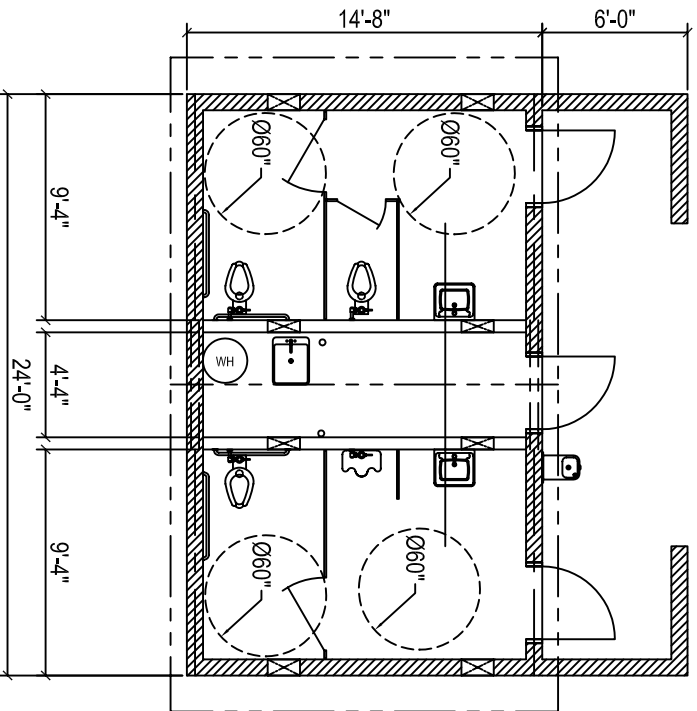
# Sierra III Multi-User Restrooms

## Value/Concrete - (24'-0" x 14'-8")

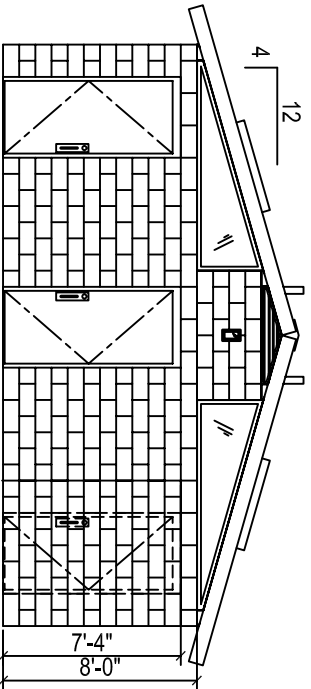
NTS - PRELIMINARY NOT FOR CONSTRUCTION

### STANDARD ITEMS IN SIERRA VALUE/CONCRETE BUILDING PACKAGE:

WALLS: 8" DRY-STACK CMU, (concrete filled & steel reinforced), BROWN OR GRAY COLOR. SPLIT OR SMOOTH EXTERIOR FINISH.  
 PREFAB ROOF PANELS: 6" STEEL FRAME, 18" O.C., 3/4" CDX PLY, EXT. SHEATHING, R-19 INSULATION, WHITE FRP CEILING ON 1/2" OSB.  
 ROOFING: H-RIB METAL ROOFING & TRIM OVER ROOFING FELT, MOCHA (dark brown) COLOR, OPTIONAL ROOFING COLORS AVAILABLE.  
 INTERIOR FINISH: WHITE FRP ON WALLS & VAULTED CEILING, UNFINISHED INTERIOR MECHANICAL ROOM WALLS.  
 DOORS & FRAMES: 3'-0" x 7'-0" GALV. STEEL DOOR, HONEYCOMB CORE, 2" FRAME, POWDERCOATED BLACK; COMMERCIAL HARDWARE.  
 WINDOWS: TRANSLUCENT LEXAN IN STEEL FRAME, POWDERCOATED BLACK.  
 SKYLIGHTS: RECTANGULAR IN ANODIZED ALUMINUM FRAME, STD. IN SIERRA III & IV, OPTIONAL IN SIERRA & PIONEER, II & STRETCH.  
 WALL VENTS: EXPANDED STEEL MESH OVER GALV. LOUVERS W/ INSECT SCREEN IN STEEL FRAME, POWDERCOATED BLACK.  
**AVAILABLE FIXTURE PACKAGES:**  
 PLUMBING: CHINA OR STAINLESS STEEL, FIXTURES, GRAB BARS, MIRRORS; STALL PARTITIONS & DOORS; SHOWER FIXTURES.  
 ELECTRICAL: INTERIOR & EXTERIOR LIGHTS, PHOTOEYE, MAIN BREAKER PANEL.  
**OPTIONS (must be on quote to be supplied):**  
 SIGNS, PAPER & SOAP DISPENSERS, WASTE RECEPTACLES, DIAPER CHANGING STATIONS, LAV SHIELDS (lavatory pipe insulation boots), COMFORT HEAT, HAND DRYERS, WATER HEATER PKG., DOOR CLOSERS, ELECT. DOOR LOCKS, CONCESSION COUNTER & ROLL-UP WINDOW, ROOF EXTENSION, 3-TAB COMPOSITION OR CEDAR ROOFING, CUSTOM EXTERIORS (wood, stucco, fiber-cement, masonry).  
**IMPORTANT: REFER TO QUOTE AND SPEC. FOR THE ITEMS INCLUDED WITH YOUR BUILDING PACKAGE.**

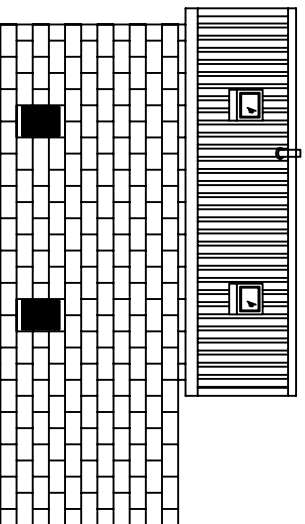
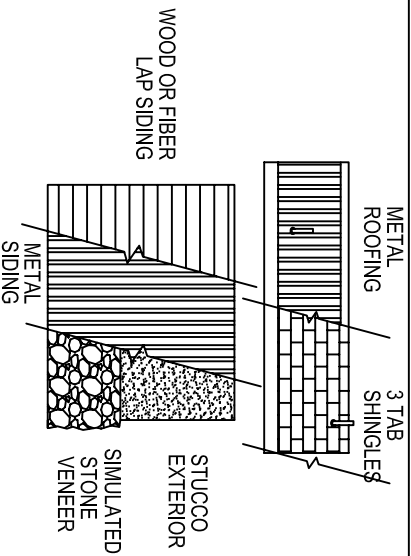


FLOOR PLAN



FRONT VIEW

### ROOFING CHOICES AND OPTIONAL EXTERIORS



INTERIOR ELEVATION

MODEL:

2061

DATE

MM/DD/YY

REVISIONS

DATE BY

DATE BY

DATE BY

DRAWN BY: FB

SHEET NO.

A2.1

# ROMTEC

18240 NORTH BANK ROAD - ROSEBURG, OR 97470  
 (541)-496-3541 info@romtec.com  
 www.romtec.com